
LONGAFORD | 3 BEDROOM HOUSE | 98.04m²

• 3 bedrooms • Kitchen/dining room • Master bedroom with en-suite • Downstairs cloakroom • Garage and/or parking • Lawned garden



A 3 bedroom house with the entrance hall leading you to the kitchen/dining room with door leading into the garden, a separate lounge and downstairs cloakroom. Stairs lead you to the first floor and the master bedroom with en-suite, bedroom two and three and a separate bathroom.

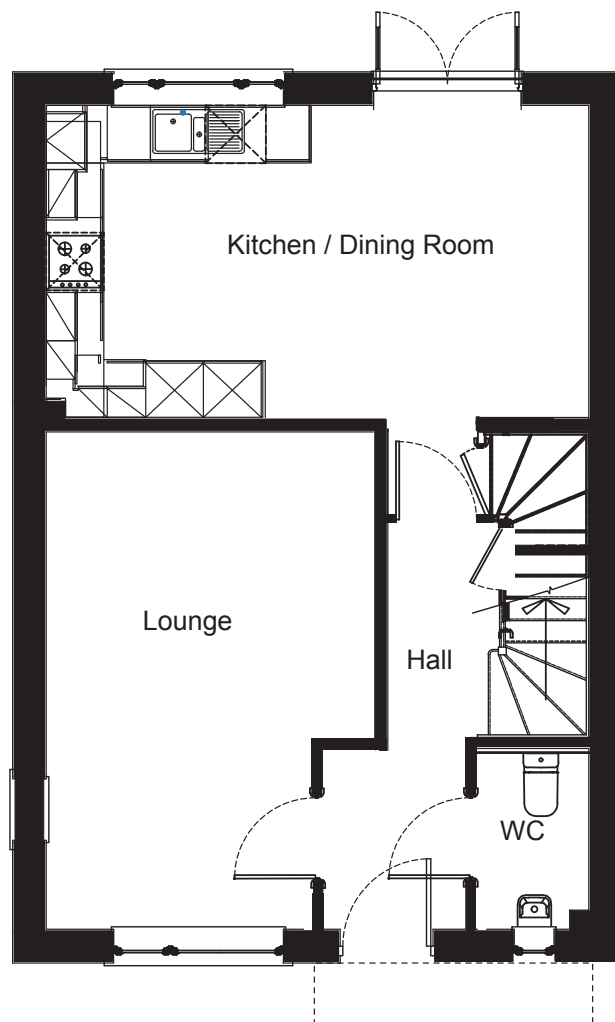
GROUND FLOOR

KITCHEN/ DINING ROOM

5.64m x 3.26m
(18'6" x 10'9")

LOUNGE

3.34m x 5.15m
(10'11" x 16'11")



FIRST FLOOR

BEDROOM 1

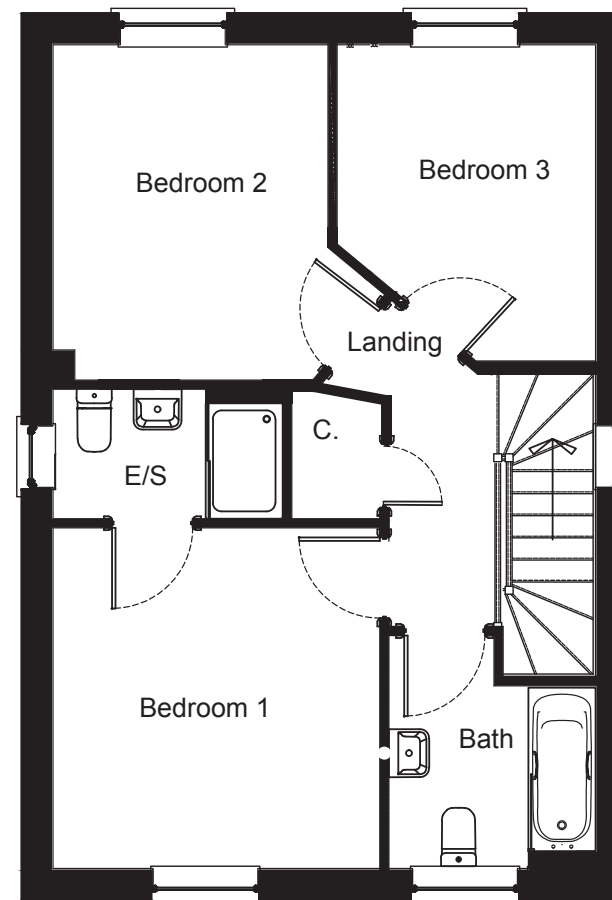
3.42m x 3.46m
(11'3" x 11'4")

BEDROOM 2

3.06m x 3.74m
(10'0" x 12'3")

BEDROOM 3

2.49m x 3.31m
(8'2" x 10'10")



The information provided is for guidance only. It is not part of a contract or offer. All dimensions are subject to construction tolerances and images vary between plots. Windows, external finishes and landscaping may vary. It is important that purchasers ensure that they are happy with the details of their plot with the Sales Advisor. Boundary treatments altered for artistic effects. All information is correct at time of print but is subject to change.