
RUNDLESTONE | 4 BEDROOM DETACHED HOUSE | 115.29m²

▪ 4 bedrooms ▪ Kitchen/dining room ▪ Lounge ▪ Utility room ▪ Master bedroom with en-suite ▪ Integral garage and parking ▪ Lawned garden



A four bedroom detached house comprising of a kitchen/dining room, which has the benefit of double doors leading into your garden, a utility room with direct access outside, a spacious lounge, downstairs cloakroom and access from the hall into the integral garage. Continue upstairs to the first floor and the master bedroom with en-suite, bedroom two, three and four and a separate bathroom.

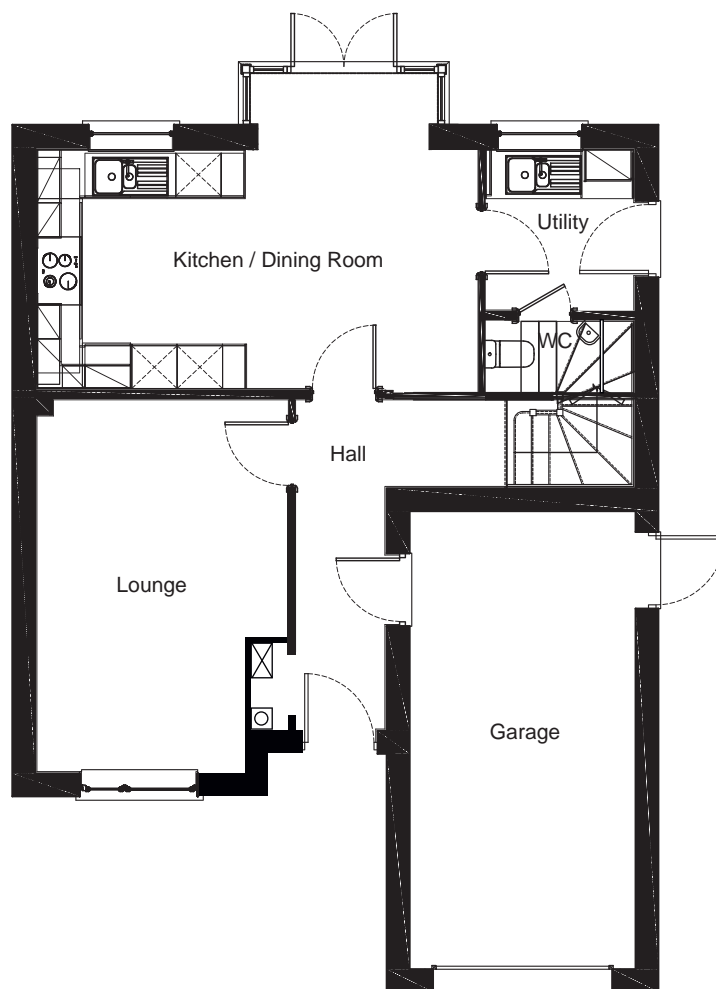
GROUND FLOOR

KITCHEN/ DINING ROOM

5.55m x 3.16m
(18'2" x 10'4")

LOUNGE

3.32m x 4.92m
(10'11" x 16'2")



FIRST FLOOR

BEDROOM 1

4.32m x 3.18m
(14'2" x 10'5")

BEDROOM 2

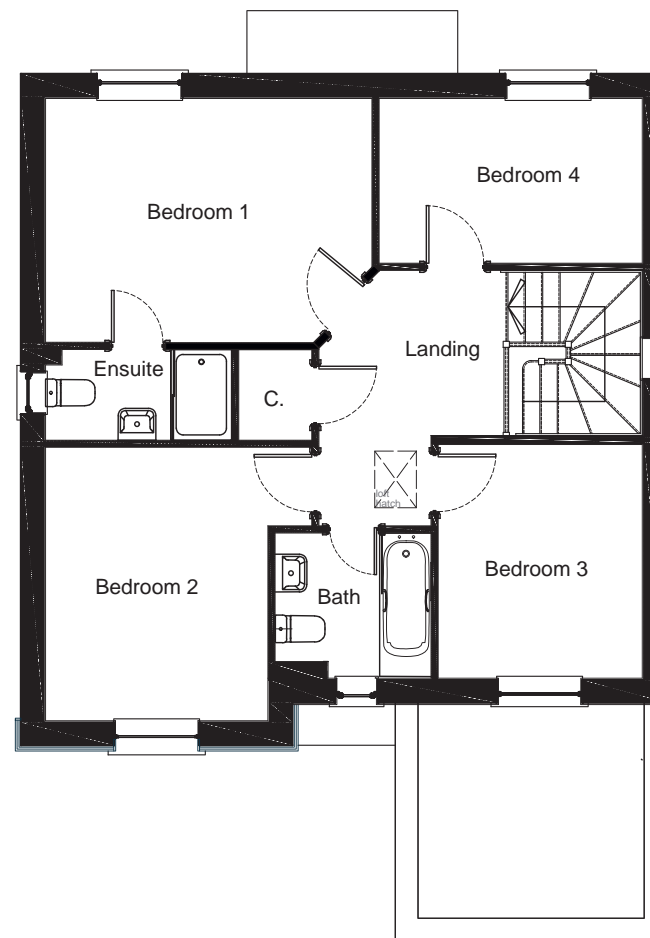
2.94m x 3.65m
(9'8" x 12'0")

BEDROOM 3

2.59m x 3.09m
(8'6" x 10'2")

BEDROOM 4

3.48m x 2.18m
(11' 5" x 7'2")



The information provided is for guidance only. It is not part of a contract or offer. All dimensions are subject to construction tolerances and images vary between plots. Windows, external finishes and landscaping may vary. It is important that purchasers ensure that they are happy with the details of their plot with the Sales Advisor. Boundary treatments altered for artistic effects. All information is correct at time of print but is subject to change.