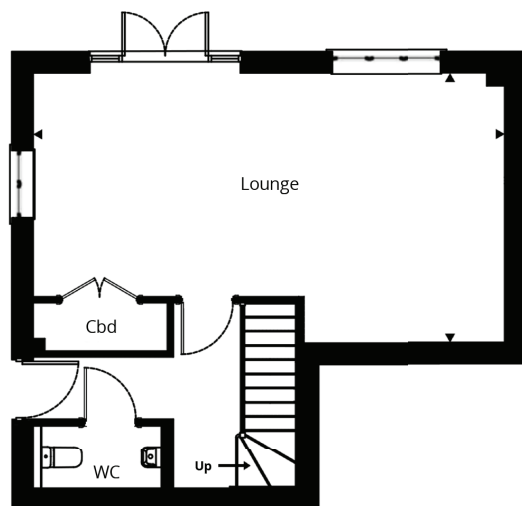

BRIMHILL | 4 BEDROOM SEMI-DETACHED TOWN HOUSE | 158m²

• 4 bedrooms • Kitchen/dining room • Study • Master bedroom with en-suite • Garage and parking • Lawned garden

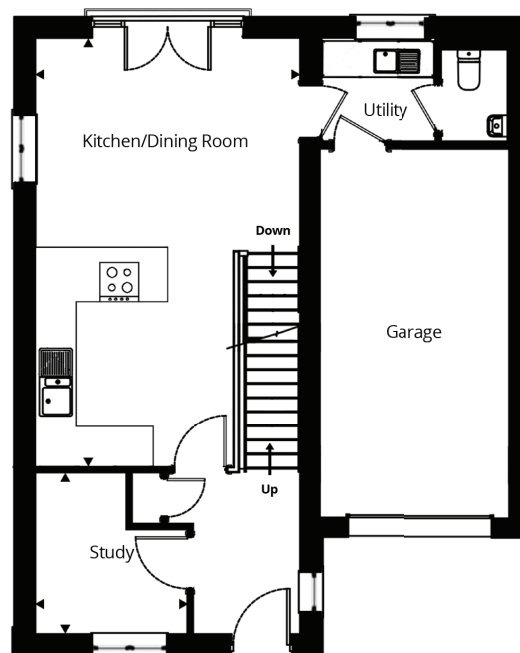


A 3 storey, four bedroom semi-detached town house. The entrance hall leads to a study, spacious kitchen/dining room with Juliet balcony, utility room, cloakroom and integral garage. Stairs lead down to the lounge with double doors leading to the garden and a cloakroom. Stairs lead up from the ground floor to a spacious master bedroom with en-suite and the remaining three bedrooms and a family bathroom.



LOWER GROUND FLOOR

LOUNGE
7.7 x 4.4m
(25'2" x 14'5")

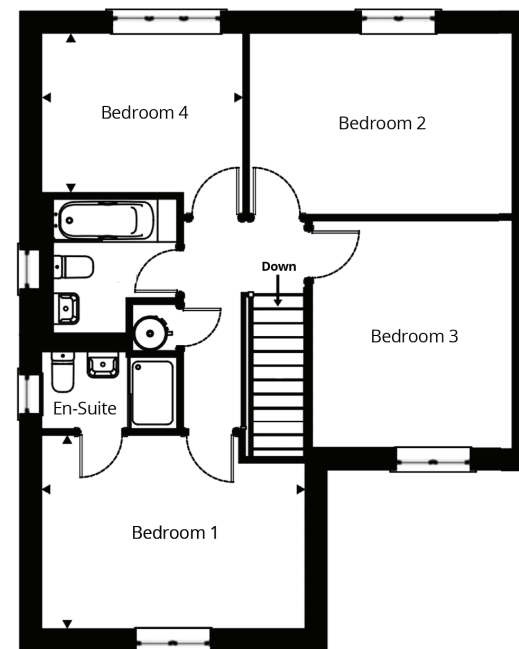


GROUND FLOOR

KITCHEN/DINING ROOM 4.3 x 7m
(14'1" x 22'10")

STUDY 2.5 x 2.6m
(8'2" x 8'5")

UTILITY 1.9 x 1.7m
(6'1" x 5'6")



FIRST FLOOR

BEDROOM 1 4.3 x 3.1m
(14'1" x 10'4")

BEDROOM 2 4.3 x 3m
(14'1" x 9'8")

BEDROOM 3 3.3 x 3.7m
(10'9" x 12'3")

BEDROOM 4 3.3 x 2.6m
(10'9" x 8'6")

The information provided is for guidance only. It is not part of a contract or offer. All dimensions are subject to construction tolerances and images vary between plots. Windows, external finishes and landscaping may vary. It is important that purchasers ensure that they are happy with the details of their plot with the Sales Advisor. Boundary treatments altered for artistic effects. All information is correct at time of print but is subject to change.