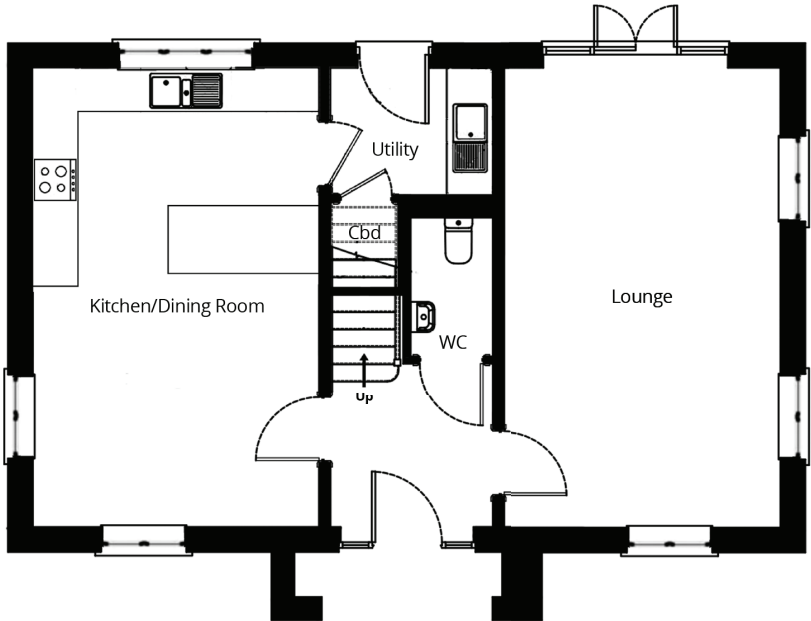

CORNDON | 4 BEDROOM DETACHED HOUSE | 125m²

• 4 bedrooms • Kitchen/dining room • Utility room • Master bedroom with en-suite • Garage and parking • Lawned garden

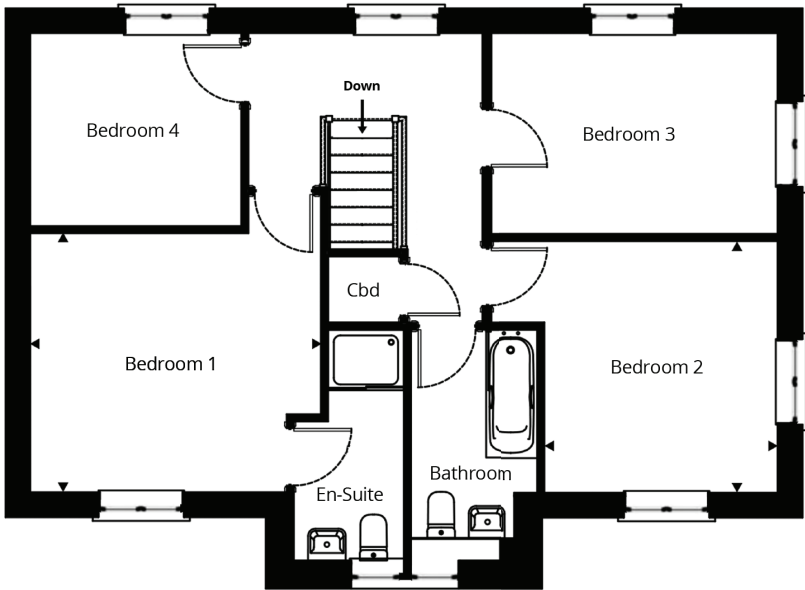


A four bedroom detached house. The entrance hall leads to the downstairs cloakroom and spacious lounge with double doors leading out into the garden, a kitchen/dining room and a utility room with direct access to outside. Stairs lead to the first floor to the en-suite master bedroom, bedroom two, three and four and a separate bathroom.



GROUND FLOOR

KITCHEN/DINING ROOM	LOUNGE
3.8 x 6.1m (12'5" x 19'11")	3.7 x 6.1m (12'0" x 19'11")



FIRST FLOOR

BEDROOM 1	BEDROOM 2	BEDROOM 3	BEDROOM 4
4.0 x 3.2 (13'1" x 10'4")	2.8 x 3.7m (9'1" x 12'1")	3.7 x 2.3m (12'1" x 7'5")	2.7 x 2.7m (8'5" x 8'5")

The information provided is for guidance only. It is not part of a contract or offer. All dimensions are subject to construction tolerances and images vary between plots. Windows, external finishes and landscaping may vary. It is important that purchasers ensure that they are happy with the details of their plot with the Sales Advisor. Boundary treatments altered for artistic effects. All information is correct at time of print but is subject to change.

► Indicates dimensions in irregular rooms