

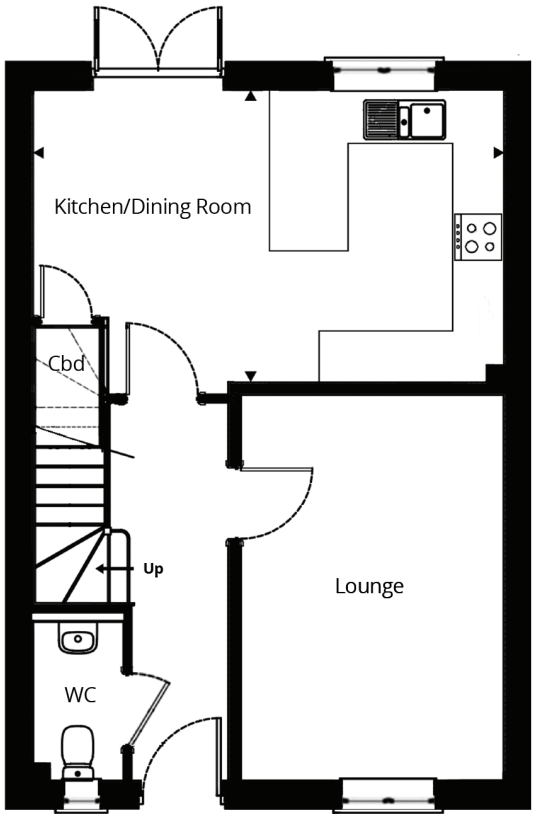
---

## HAYTOR | 3 BEDROOM HOUSE | 91m<sup>2</sup>

- 3 bedrooms
- Kitchen/dining room
- Master bedroom with en-suite
- Garage and/or parking
- Lawned garden

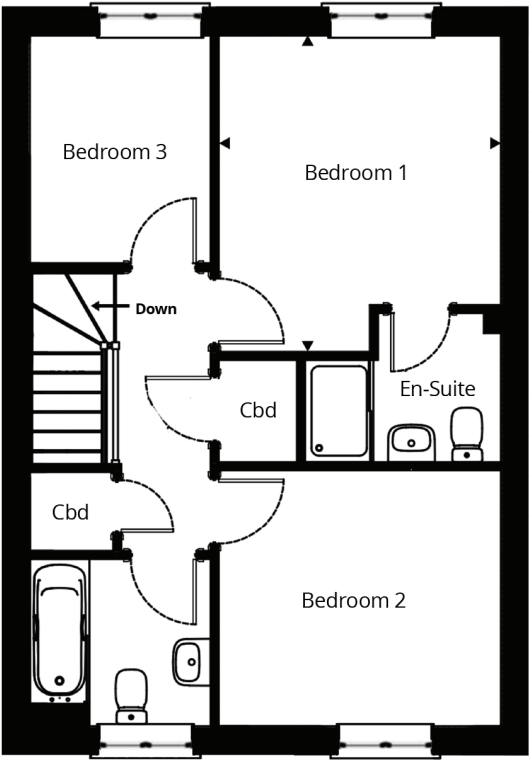


A three bedroom house with hall leading into the kitchen/dining room with the benefit of double doors leading out into the garden, a separate lounge and downstairs cloakroom. Stairs lead up to the first floor to the master bedroom with en-suite, two further bedrooms, two storage cupboards and a separate bathroom.



**GROUND FLOOR**

KITCHEN/DINING ROOM	LOUNGE
5.5 x 3.4m (18'2" x 11'03")	3.1 x 4.5m (10'1" x 14'10")



**FIRST FLOOR**

BEDROOM 1	BEDROOM 2	BEDROOM 3
3.3 x 3.7m (10'10" x 12'2")	3.3 x 3.0m (10'10" x 9'11")	2.1 x 2.7m (7'0" x 8'9")

The information provided is for guidance only. It is not part of a contract or offer. All dimensions are subject to construction tolerances and images vary between plots. Windows, external finishes and landscaping may vary. It is important that purchasers ensure that they are happy with the details of their plot with the Sales Advisor. Boundary treatments altered for artistic effects. All information is correct at time of print but is subject to change.

► Indicates dimensions in irregular rooms