

---

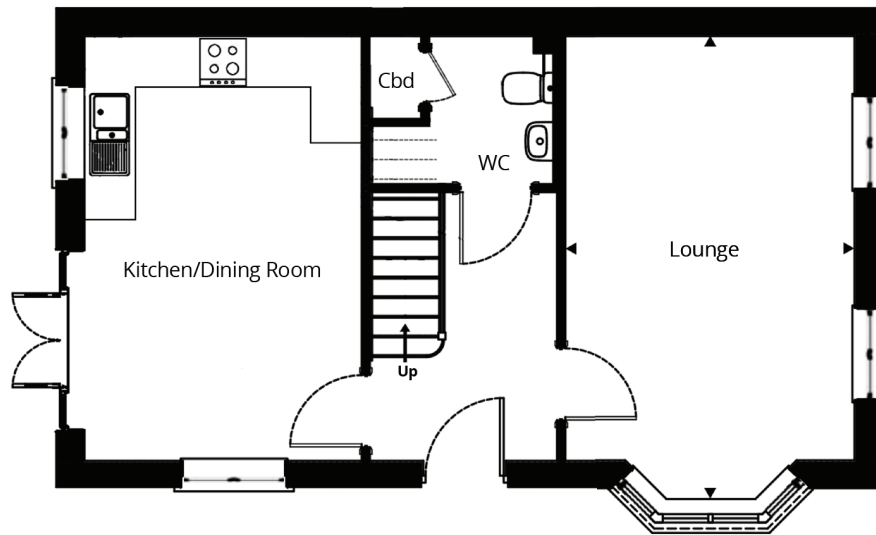
**STEEPERTON** | 3 BEDROOM HOUSE | 92m<sup>2</sup>

• 3 bedrooms • Kitchen/dining room • Master bedroom with en-suite • Garage and/or parking





A three bedroom house. The entrance hall leads you to the large kitchen/dining room with double doors on the side elevation leading into your garden. The lounge has a lovely bay window and the downstairs cloakroom also has a useful storage cupboard. Upstairs on the first floor is the master bedroom with en-suite, two further bedrooms and a separate bathroom.



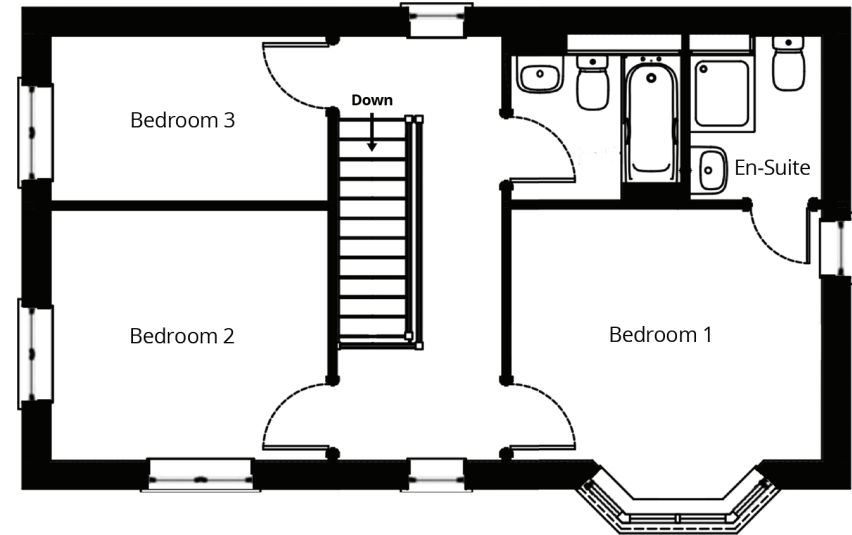
### GROUND FLOOR

#### KITCHEN/DINING ROOM

3.3 x 5.0m  
(10'8" x 16'4")

#### LOUNGE

3.4 x 5.0m  
(11'1" x 16'4")



### FIRST FLOOR

#### BEDROOM 1

3.6 x 3.0m  
(11'8" x 9'8")

#### BEDROOM 2

3.2 x 2.9m  
(10'8" x 9'8")

#### BEDROOM 3

3.2 x 1.9m  
(10'8" x 6'4")

The information provided is for guidance only. It is not part of a contract or offer. All dimensions are subject to construction tolerances and images vary between plots. Windows, external finishes and landscaping may vary. It is important that purchasers ensure that they are happy with the details of their plot with the Sales Advisor. Boundary treatments altered for artistic effects. All information is correct at time of print but is subject to change.