
BARNARD | 4 BEDROOM DETACHED HOUSE | 111.5m²

PLOTS 58, 59, 60

▪ 4 bedrooms ▪ Kitchen/Dining room ▪ Master bedroom with en-suite ▪ Garage and parking ▪ Lawned garden



A 4 bedroom detached house. The entrance hall leads to a downstairs cloakroom and into the large dining area. The separate kitchen has direct access outside and the spacious lounge has double doors leading out into the garden. Stairs lead up to the first floor to the en-suite master bedroom, bedroom two, three and four and a separate family bathroom.

GROUND FLOOR

DINING ROOM

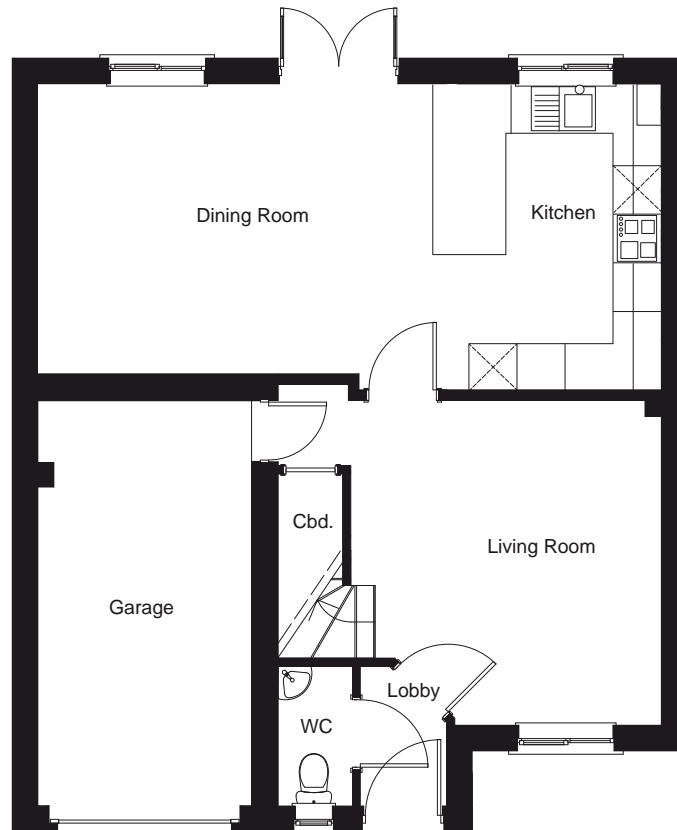
3.6 x 4.9m
(11' 8" x 16')

KITCHEN

3.8 x 2.8m
(12' 5" x 9' 2")

LIVING ROOM

4.0 x 3.9m
(13' 1" x 12' 8")



FIRST FLOOR

BEDROOM 1

3.4 x 3.6m
(11' 2" x 11' 8")

BEDROOM 2

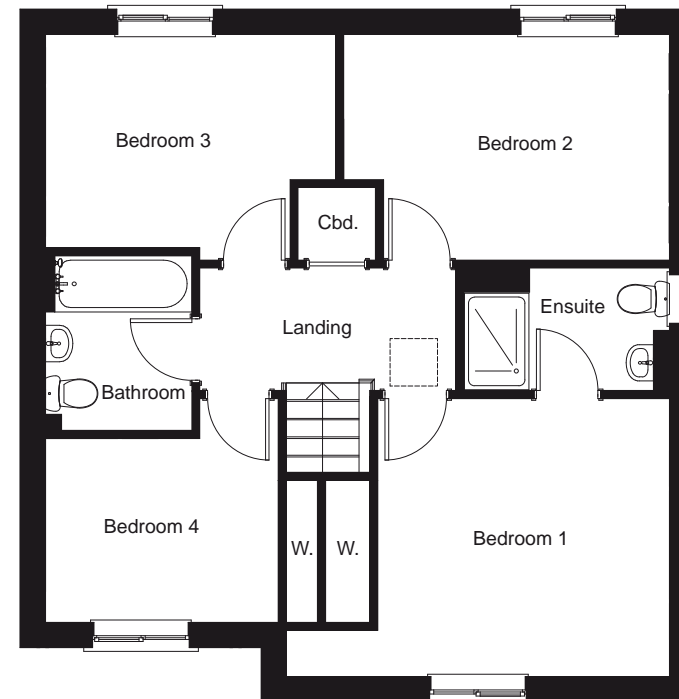
2.8 x 4.0m
(9' 2" x 13' 1")

BEDROOM 3

2.6 x 3.6m
(8' 5" x 11' 8")

BEDROOM 4

2.3 x 2.9m
(7' 5" x 9' 5")



The information provided is for guidance only. It is not part of a contract or offer. All dimensions are subject to construction tolerances and images vary between plots. Windows, external finishes and landscaping may vary. It is important that purchasers ensure that they are happy with the details of their plot with the Sales Advisor. Boundary treatments altered for artistic effects. All information is correct at time of print but is subject to change.