
LITTAFORD | 4 BEDROOM HOUSE | 108.56m²

• 4 bedrooms • Kitchen/dining room • Downstairs cloakroom • En-suite to master bedroom • Garage and parking • Lawned garden

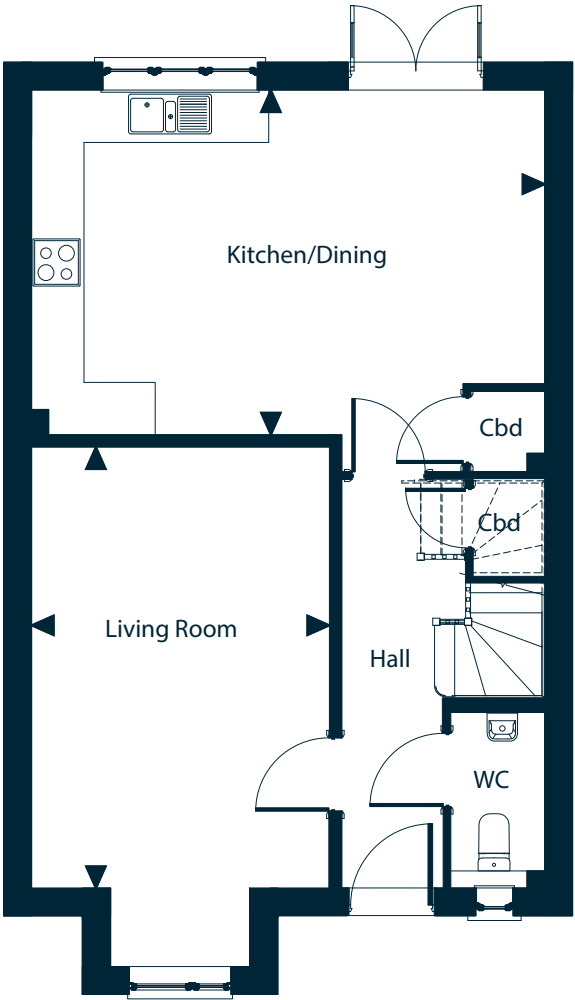


A 4 bedroom house with a downstairs cloakroom, kitchen/dining room with double doors leading into the garden and separate lounge. The first floor benefits from a master bedroom with en-suite, bedroom 2, bedroom 3 and a separate bathroom.

GROUND FLOOR

**KITCHEN/
DINING/
FAMILY ROOM**
5.87m x 3.94m
(19' 3" x 12' 11")

LOUNGE
3.41m x 5.05m
(11' 2" x 16' 6")



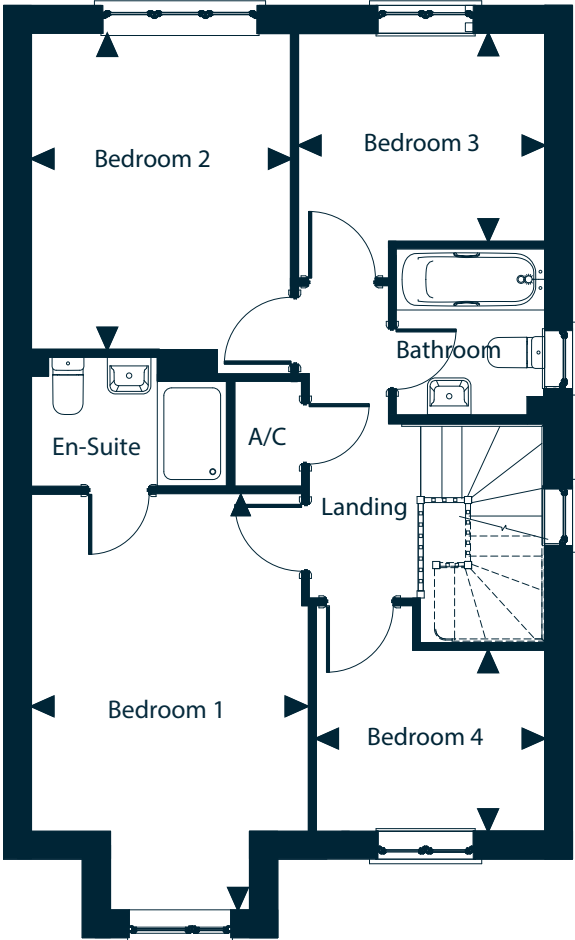
FIRST FLOOR

BEDROOM 1
3.16m x 3.85m
(10' 4" x 12' 7")

BEDROOM 2
2.96m x 3.61m
(9' 8" x 11' 10")

BEDROOM 3
2.81m x 2.44m
(9' 2" x 8' 0")

BEDROOM 4
2.61m x 2.06m
(8' 7" x 6' 9")



The information provided is for guidance only. It is not part of a contract or offer. All dimensions are subject to construction tolerances and images vary between plots. Windows, external finishes and landscaping may vary. It is important that purchasers ensure that they are happy with the details of their plot with the Sales Advisor. Boundary treatments altered for artistic effects. All information is correct at time of print but is subject to change.

► Indicates dimensions in irregular rooms